

**Stat5b antibody - C-terminal region**  
**Rabbit Polyclonal Antibody**  
**Catalog # AI11137****Specification**

---

**Stat5b antibody - C-terminal region - Product Information**

Application	WB, IHC
Primary Accession	<a href="#">P42232</a>
Other Accession	<a href="#">NM_011489</a> , <a href="#">NP_035619</a>
Reactivity	Human, Mouse, Rat, Rabbit, Zebrafish, Horse, Bovine, Dog
Predicted Host	Human, Rabbit, Pig, Chicken, Horse, Dog
Clonality	Rabbit
Calculated MW	Polyclonal 90kDa KDa

**Stat5b antibody - C-terminal region - Additional Information****Gene ID** 20851**Other Names**

Signal transducer and activator of transcription 5B, Stat5b

**Format**

Liquid. Purified antibody supplied in 1x PBS buffer with 0.09% (w/v) sodium azide and 2% sucrose.

**Reconstitution & Storage**

Add 50 ul of distilled water. Final anti-Stat5b antibody concentration is 1 mg/ml in PBS buffer with 2% sucrose. For longer periods of storage, store at 20°C. Avoid repeat freeze-thaw cycles.

**Precautions**

Stat5b antibody - C-terminal region is for research use only and not for use in diagnostic or therapeutic procedures.

**Stat5b antibody - C-terminal region - Protein Information****Name** Stat5b**Function**

Carries out a dual function: signal transduction and activation of transcription. Mediates cellular responses to the cytokine KITLG/SCF and other growth factors. Binds to the GAS element and activates PRL-induced transcription. Positively regulates hematopoietic/erythroid differentiation.

**Cellular Location**

Cytoplasm. Nucleus. Note=Translocated into the nucleus in response to phosphorylation

**Tissue Location**

In the virgin, found in most tissues. Particularly abundant in muscle tissue of virgin and lactating

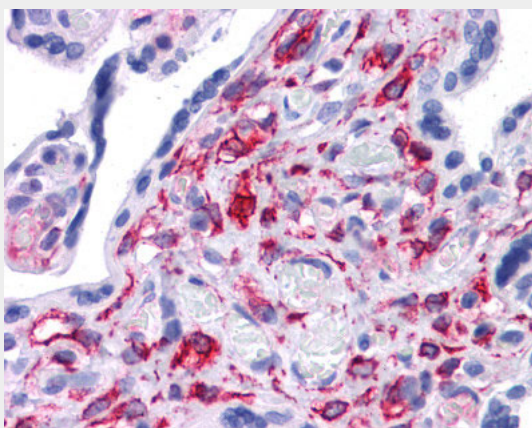
females, and of males.

### **Stat5b antibody - C-terminal region - Protocols**

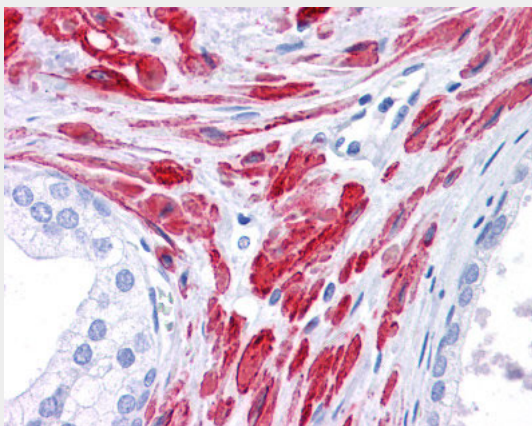
Provided below are standard protocols that you may find useful for product applications.

- [Western Blot](#)
- [Blocking Peptides](#)
- [Dot Blot](#)
- [Immunohistochemistry](#)
- [Immunofluorescence](#)
- [Immunoprecipitation](#)
- [Flow Cytometry](#)
- [Cell Culture](#)

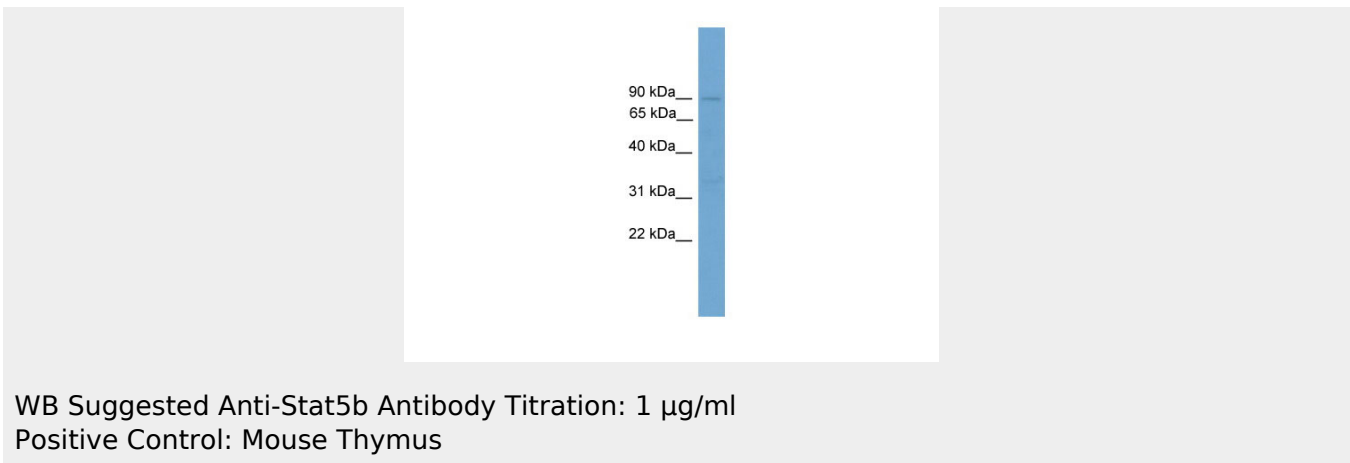
### **Stat5b antibody - C-terminal region - Images**



Human Prostate



Human Prostate



90 kDa\_\_  
65 kDa\_\_  
40 kDa\_\_  
31 kDa\_\_  
22 kDa\_\_

WB Suggested Anti-Stat5b Antibody Titration: 1 µg/ml  
Positive Control: Mouse Thymus